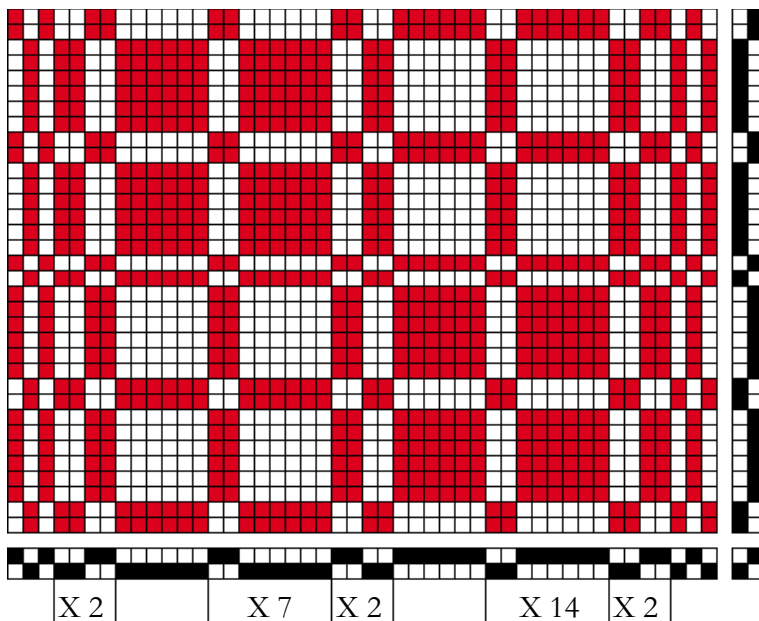
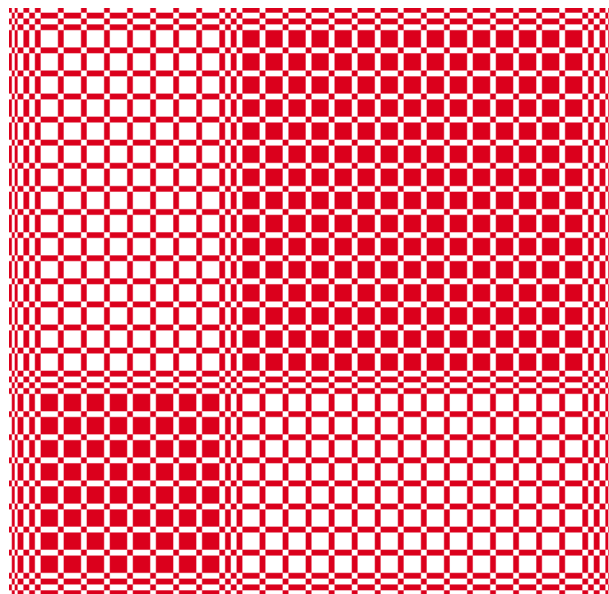
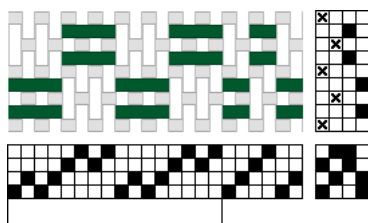


Greenery – a linen pillow in *plattväv**

Draft of the month – February 2017



Profile draft: One square corresponds to two warp threads and one tabby pick + one pattern pick.



Warp: 16/2 linen yarn, tinted 4 different shades of light green
 Tabby weft: 16/2 linen yarn (light green)
 Pattern weft: 6/1 tow linen (bleached)
 Width in reed: 42 cm
 Finished width: approx. 40 cm
 Reed: 50/10, 1 end per heddle, 2 ends per dent
 Selvages: 2 ends threaded together, once per side
 Total warp ends: 420
 Picks per cm: approx. 10 picks/cm

Handvävare i Norr is the association's northernmost region and last year we had a "Remote Weaving Group". Our theme was *Plattväv*, and all of the participants wove *plattväv* at on their own looms at home. At our group meetings, we discussed the theme and shared our progress on our own *plattväv* projects. The group's completed projects were displayed during the fall/winter of 2015/2016 at, among other places, libraries throughout the Norrbotten region.

* *Plattväv* – monk's belt variation

Design and execution: Rose-Marie Lundeberg Edström