

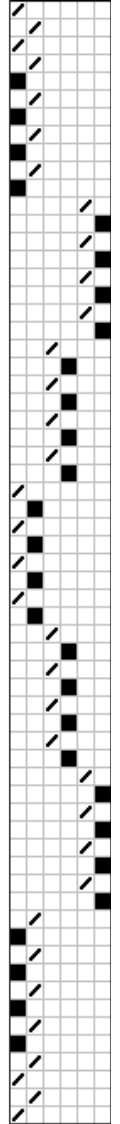
Doormat in weftwise rib

Draft of the month – January 2017

- Warp: 12/6 cotton rug warp, unbleached, light green, black, and dark brown
 Weft: 12/6 cotton rug warp, light green, as well as 1.5 cm wide rags, 4 wound together
 Reed: 40/10, 1 end per heddle, 2 ends per dent, however black + dark brown threaded together and sleyed 4 ends per dent
 Total warp ends: 576
 Width in reed: 72cm




Warp order

black + dark brown	12		10				10		12	44
unbleached		1			1			1		222
light green		1		44	1	44		1		310
		x 34			x 154			x 34		576


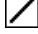


12ends	68ends	10ends	44ends	44ends	44ends	44ends	44ends	44ends	44ends	44ends	10ends	68ends	12ends
--------	--------	--------	--------	--------	--------	--------	--------	--------	--------	--------	--------	--------	--------

Warp:

-  one black end + one brown end
-  unbleached
-  light green

Weft:

-  rags
-  light green cotton rug warp



A description from the National Association of Handweavers. www.riksvav.se